

# Visual Intelligence for mobility

Peregrine.ai enables new value creation  
from millions of vehicle sensors  
from edge to cloud through an end-to-end approach.



## Filter data for relevance

**Less than 1%** of data holds most of the value. Find the hard-to-find items at the edge **saving time and money**.



## Deliver data just-in-time

GPU hours and data storage drive costs. Cut all the noise and only **put new valuable data assets to work when you need them**.



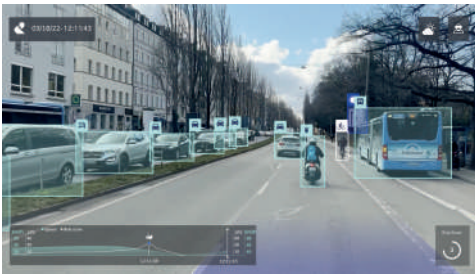
## Run data campaign

Avoid exhaustive data collection. Run **data collection campaigns** by fleet-sourcing unknown scenarios, edge cases and conditions.



## Anonymize visual data

The identity of traffic participants must be protected at all times. **Anonymize personal information automatically** before storing scenes.



## Understand what is happening on the road

Risk is highly relevant to everyone on the road! We drive **millions of miles** in real world traffic to build our ability to **filter data at the edge** and bring back only what is relevant to our customers.

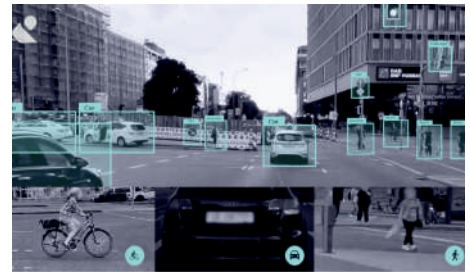


## Geo-location data as-a-service

**Validation of road assets** and **freshness of data** is becoming more critical. We can deliver **road insights just-in-time** to update maps, build smart cities and enhance mobility services.

Source image

Found 200 items



## Data campaigns for edge cases and rare conditions

Connected vehicles collect terabytes of data and still **miss the critical edge cases** from which they can learn. We can enable **data campaigns to look for the hard to find** scenarios **saving significant resources**.



## Ensuring privacy in visual data

We bring a **privacy first approach** to visual data through **precise and automatic anonymization** of personal information such as faces and license plates.

**Empowering a safer and more sustainable mobility ecosystem for all.**

Peregrine Technologies GmbH | Berlin, Germany | peregrine.ai | hello@peregrine.ai

